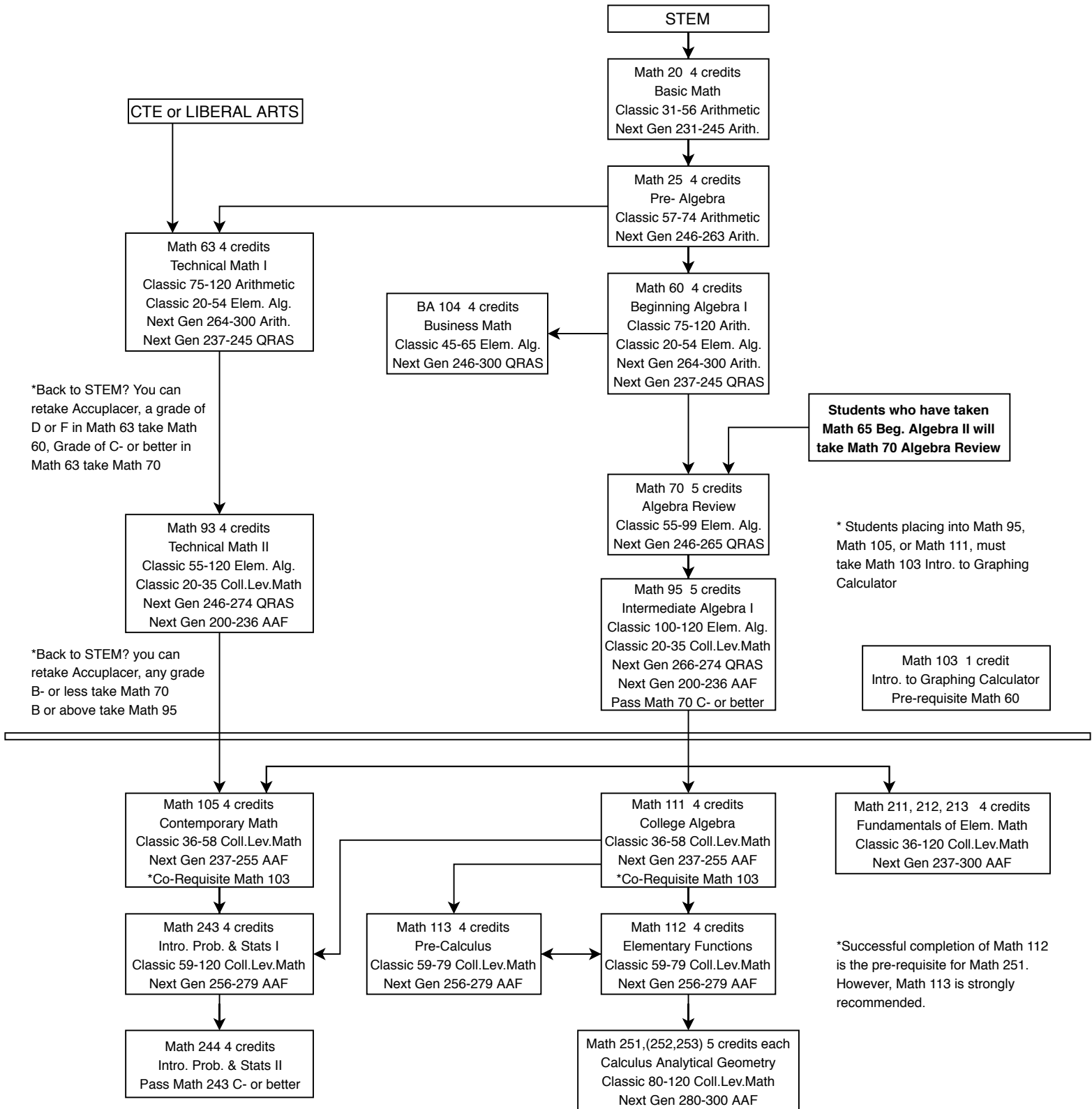


Treasure Valley Community College Math Course Flow Chart

*C- or Better Grade to Progress

Placement Scores for Accuplacer Classic and Next Generation (est. 1/28/2019) *updated 2/12/2019



*Back to STEM? You can retake Accuplacer, a grade of D or F in Math 63 take Math 60, Grade of C- or better in Math 63 take Math 70

*Back to STEM? you can retake Accuplacer, any grade B- or less take Math 70 B or above take Math 95

Students who have taken Math 65 Beg. Algebra II will take Math 70 Algebra Review

* Students placing into Math 95, Math 105, or Math 111, must take Math 103 Intro. to Graphing Calculator

Math 103 1 credit
Intro. to Graphing Calculator
Pre-requisite Math 60

*Successful completion of Math 112 is the pre-requisite for Math 251. However, Math 113 is strongly recommended.

Key to Abbreviations

- Classic = Accuplacer Classic Test Prior to 1/28/2019
- Next Gen = Accuplacer Next Generation Test After 1/28/2019
- Arith. = Classic or Next Gen Arithmetic Accuplacer Exam
- Elem. Alg. = Classic Elementary Algebra Accuplacer Exam
- Coll.Lev.Math = Classic College Level Math Exam
- QRAS = Next Gen Quantitative Reasoning and Statistics Exam
- AAF = Next Gen Advanced Algebra and Functions Exam

Moving Through English

Placement Scores for Accuplacer Classic and Next Generation (est. 1/28/2019) updated 2/12/2019

